

# The Messenger



## QUOTE OF THE MONTH

*For as the soil makes the sprout come up and a garden causes seeds to grow, so the Sovereign LORD will make righteousness and praise spring up before all nations.* Isaiah 61:11, NIV

Newsletter Team:  
Karen Urban, Rick Padin,  
Ginnie Berge and Deacon  
Steve Smeach

## IN THIS ISSUE

- Monthly Reports
- Mission Team of the Month
- Spotlight on Service
- Snaps & Snippets
- Calendar
- Thank you to Print Shop



LUTHERAN  
CHURCH  
OF OUR  
SAVIOUR

8401 W. Hillsborough Avenue, Tampa FL 33615  
[www.lcostampa.org](http://www.lcostampa.org) ~ 813-884-1232  
[www.facebook.com/lcostampa](https://www.facebook.com/lcostampa)  
Email ~ [lcoshurchoffice@gmail.com](mailto:lcoshurchoffice@gmail.com)

## OUR VISION

Through LCOS all come to know the unconditional love of God, grow in their faith, and share their love and faith with others.

## OUR MISSION

That all may experience the love of Jesus Christ, we reach up through worship celebration. We reach out by sharing our faith. We reach in through prayer and study.

## SUNDAY WORSHIP CELEBRATIONS

**Bible Study** 8:30am

**Worship Service** 9:30am

**Fellowship** 10:30am

## CHURCH STAFF

Rev. Stephen Kauffman, **Pastor**

Stephen C Smeach, **Deacon**

Naoko Okada, **Minister of Music**

Charlie McCoy, **Accountant**

Roger Swain, **Financial Secretary**

## CHURCH COUNCIL (*Ministry Area*)

Sara Berge, **President**

(*Governance & Administration*)<sup>a</sup>

Don Richardson, **Vice President** (*Education*)

Kristi Saligame, **Finance/Treasurer**  
(*Stewardship & Finance*) and (*Social Media*)<sup>b</sup>

Barbara Beauregard (*Facility & Grounds*)

Charlie McCoy (*Stewardship & Finance*)

Lynne O'Reilly (*Care*)<sup>b</sup>

Fran Palermo (*Fellowship & Hospitality*)<sup>b</sup>

Sharon Rozell (*Outreach & Evangelism*)

Gail Smeach, (*Worship & Music*)

## MISSION TEAM LEADERS

### Acolytes & Crucifers

**Adult Education** Don Richardson & Kent Chetlain

**Altar Guild** Gail Smeach & Barbara Beauregard

**AV Team** Heidi Richters

**Bulletin** Ginnie Berge & Barbara Beauregard

**Coffee Hour** Martin Stewart

**Counters**

**Outreach & Evangelism** Danielle Kearney & Sharon Rozell

**Facilities & Grounds** Barbara Beauregard

**Fellowship** Don Richardson & Martin Stewart

**Food Bank** Kristi Saligame & Rita Blyden

**Hospitality** Heidi Richters & Fran Beauregard

**Information Technology** Kent Chetlain

**LAFFS** Lynne O'Reilly

**Lay Pastoral Care Team** Lynne O'Reilly & Steve Smeach

**Newsletter** Karen Urban

**Note Folks** Linda Dillinger & Carolyn Kunzman

**Ushers** Martin Stewart

**Website & Social Media** Kristi Saligame

**Worship & Music** Naoko Okada

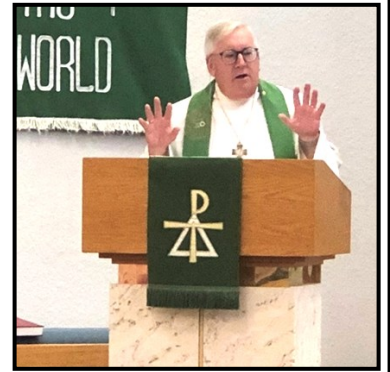
<sup>a</sup>Includes Pr. Kauffman and Deacon Smeach

<sup>b</sup>Includes Deacon Smeach

# Hungry

*Submitted by Pastor Stephen Kauffman*

In a 1982 commercial for Burger King a young Meg Ryan advertises BK's new "Aren't You Hungry Game," where winners got a whopper, a drink, or even cash. Burger King, of course, is a fast-food restaurant chain headquartered right here in unincorporated Miami-Dade County.



Are you feeling hungry lately? If you say Yes, you are not alone! Just look around you and listen. We are hungry people, and we hunger for many things. We are a physically hungry people. Just take a ride down Hillsborough Avenue and look to your left or right. Even in times of economic insecurity the lots are full of cars. Restaurants, supermarkets, fast food chains all compete for our attention. Food is big business. All these establishments compete for the honor of meeting our physical hungers. But we have other hungers as well. There are, also, those deep, soul centered hungers that concern us as much as those physical hungers. We hunger for more fulfilling lives, for more satisfying relationships with family and friends.

We learn from Luke that after his crucifixion, Jesus appeared to two men who were walking from Jerusalem to a town called Emmaus. As Jesus walks with them, they don't recognize him. Jesus comes to the disciples amid their grief, despair, disappointment and disbelief. Without trying to minimize or fix the disciples' feelings, Jesus listens. Finally, after listening well, Jesus teaches. In the breaking of bread, the disciples recognize the Lord!

When the disciples are unsure what to make of the mess that life has become, Jesus shows up. When their hunger for truth and certainty is most apparent, Jesus walks into the room. The answer to someone's hunger is not to ask why they are hungry. Nor is the answer to doubt a question about why they cannot believe. The answer is food.

The answer is the real Jesus showing up and easing fears. Everyone's faith needs sustenance. When we listen to the Word and gather at the table, we are looking for the God of truth and love to settle our doubts.

We have celebrated the resurrection of our Lord! Now, more than ever, is the time to join your family of faith at LCOS and find food for your deepest hungers. Are you hungry! Come, now is the time to worship!

Pastor Steve



## President's Report

*Submitted by Sara Berge*



### Hallelujah! He is Risen!

April brought the close of our Lenten journey – taking us from Hosanna to Hallelujah. Hosanna means “God save us”, which is especially appropriate for Lent, which is a time to journey through the wilderness. Our Lenten journey at LCOS included weekly study and worship sessions focused on comparing the gospel text regarding the life of Jesus.

We started the shift from Hosanna to Hallelujah Palm Sunday weekend. We welcomed families to our campus for a Community Easter Egg hunt which was filled with joy and fun. On Palm Sunday, we processed into the church waving palms proclaiming joy and praise much like the way Jesus had his triumphant entry into Jerusalem.

Holy week is always filled with a mixture of emotions. Maundy Thursday, Good Friday and Easter Sunday lead us through the Last Supper, the crucifixion and Jesus’ death and resurrection. We are so blessed to have wonderfully creative volunteers that add an amazing visual component to these services. A special thanks goes to Gail and Barbara for all the time, effort and creativity that they put into making our worship space extra special.

Now we are in the season of Easter – a time of Hallelujah, which means “Praise the Lord!” We have great things happening at LCOS - all in praise to our Lord and Savior Jesus Christ. Our journey doesn’t end – it continues. I look forward to celebrating this season of joy and praise with you throughout the month of May.



## Council Highlights for Sunday, March 15, 2025

*Submitted by Gail Smeach*



- Kim Jordan has resigned as Secretary and as a Council member for personal reasons. We wish her well.
- Kristi Saligame reported we had a good month financially. The Mortgage was paid down by \$2,000. We were able to order a new shed for yard maintenance equipment as the old one was rotting away.
- The Annual Report was completed with thanks to Deacon Steve and will be available at the Annual Congregational Meeting on March 23<sup>rd</sup>.
- Kaye Prox is serving 350-375 families per week. There has been some decreasing in government funding to Feeding Tampa Bay. Target has been added to the food pickup and Messiah Lutheran has been donating meats.
- There is an investigation into a possible part-time office person. There will be a training course in the near future for office volunteers and those who use the Church computers.
- The chain link fence belongs to LCOS and it will be repaired. Instead of replacing the destroyed wooden fence from the last hurricane season, a privacy cloth will be placed along the chain link fence.
- The A/C unit that serves the Sacristy and Classroom will be replaced. It has not worked for many years and the Classroom is getting more use now.
- The Ministry Areas and the Council Representatives were in the March Newsletter. More communication about these areas will be in future Newsletters and events.
- Plans for painting the Church were discussed. A bid for approximately half of what was budgeted was received. Color to be decided.
- The Sunshine Daycare will be starting an afterschool program in August for Kindergarten students that had been children at the Daycare.
- There was a discussion on how to facilitate a more visual presence as a Church. Hillsborough County was offering Community Impact Grants. (As a Church we were not eligible). Perhaps accent Cross shape of the Bell Tower or a simple mural.
- There is a new Garden Sign and the Congregation can help choose the paint color.
- The Synod Assembly is June 12-14<sup>th</sup>.
- The next Council Meeting is April 27<sup>th</sup>.

## Treasurer's Report—March 2025

Submitted by Kristi Saligame



### March Review:

Church **income** in March was **\$28,542**, above our budget of \$22,476 and last year's result of \$21,037.

- Member Giving was \$19,040, above our budget of \$17,841 and year-ago giving of \$17,295.
- We recognized \$6,000 in Designated Funds income in March, including \$5,000 from Bold Statement (toward the costs of a new AC unit) and \$1,000 from the Mortgage Reduction Fund.
- Facilities/other income in March was \$3,502, vs. \$3,242 in the year-ago period.

Church **expense** was **\$28,898** in March, vs. \$19,758 a year ago and our budget of \$20,286.

- In March, we set aside an additional \$2,000 in funds toward future Pastoral Call/Compensation costs.
- Facilities expense for the month of \$19,697 included \$7,497 for a new AC unit in the sanctuary building, and \$2,000 (50% deposit) toward a new storage shed.
- All other expense items were generally in line with, or below, expectations.

LCOS recorded a **net loss** of **(\$357)** in March.

### Year to Date:

Month/Q	Current Year Results			Year-Ago Results		
	<u>Income</u>	<u>Expense</u>	<u>Difference</u>	<u>Income</u>	<u>Expense</u>	<u>Difference</u>
Jan	\$19,232	\$20,710	(\$1,478)	\$16,375	\$16,954	(\$579)
Feb	\$20,527	\$19,172	\$1,355	\$18,811	\$18,589	\$222
March	\$28,542	\$28,898	(\$357)	\$21,037	\$19,758	\$1,279
<b>Total</b>	<b>\$68,301</b>	<b>\$68,781</b>	<b>(\$480)</b>	<b>\$56,222</b>	<b>\$55,301</b>	<b>\$922</b>

### Reflections:

It is Spring, and there are signs of life, and growth, all around us! Our campus is looking particularly beautiful, thanks to many members' efforts to plant flowers, lay mulch, clean up the back lot, etc. Take a few minutes, if you can, to enjoy the Memorial Garden area, before it gets too hot out there. Looking down from the choir loft on Sunday mornings, I can see growth in attendance, too – happy to see the new, returning, and visiting faces.

Healthy growth is also evident in our financial results for the first three months of this year – giving thanks for our good progress. With your support, in addition to meeting our basic operating requirements this year, we'll continue to invest in upkeep of our facilities, and we'll set aside some funds each month for future needs.

Thank you for your ongoing, faithful support of the Lutheran Church of Our Saviour! Please continue to keep the mission and ministries of this church in your prayers.

## Facility & Grounds

*Submitted by Barbara Beauregard*



Well, the grass is getting greener, flowers are blooming, leaves are unfolding on the trees, all good signs Spring is here! And we have been busy making things happen around our campus! A new A/C unit was installed that had been broken for many years, but with using all the rooms across the front of the church, behind the altar, summer would be very warm back there!! Next was work on the grounds, which needed a big cleanup.

Many trees had dead spots that were not visible until the branches fell. Enough debris had fallen to fill a rolloff dumpster not once but twice! (Big thank you to Don Richardson and Lynne O'Reilly for providing the dumpsters!) It is bad enough that we collect so much trash, but people from somewhere seem to think that it is okay to dump their unwanted furniture and other items on our grounds! If you ever see that happening take a picture or get a tag number. Allan Berge rebuilt both of our old benches to look better than when new! Makes a friendlier entry area. Sometimes you just want to sit and chat, and thanks to Allan you now can.

The Memorial Garden also has a new sign, which many of you know because you helped pick the color it will become. Don Richardson made a good choice on that. Don, Ernie and a few others put down a pallet of mulch, and planted blooming flowers making the Garden look beautiful. Shortly the outside altar will get a fresh new look, thanks to Mike Watson and his paint crew. The lights over the altar that Milton shook out of the ceiling, have been returned to their housing. Let us pray this year's hurricane season is more gentle!

The next big item on our to-do list is the back fence. Hurricane Milton took care of the wood fence and it appears our back apartment neighbors have really messed up the chain link fence. Code Enforcement made the complex clean up their trash pile and I have spoken to them about the remaining items along our fence. We are going to repair the chain link fence, put privacy cloth on the back side and bougainvillea plants along the inside. They bloom a long season, have brilliant color and will dress up the back lot providing privacy and safety.

This year we added a new event: a neighborhood Easter Egg Hunt. Hope all the local kids who came enjoyed the hunt. This may become an annual event. Our Palm Sunday Service was once again decorated in palms, all provided from our property.

That was followed by Holy Week, which is always a beautiful reminder of our celebration. Then on to Easter Sunday, and Easter Breakfast, which we all look forward to! (pictures next month)

Our calendar of projects slows down a little when the days get hotter. We do want to start thinking about painting the outside of our buildings and just like you helped pick colors for the Memorial Garden sign, you can do the same for the outside color ideas. More later on that.

Normally in May we have celebrated our church anniversary on the 5th, BUT in checking our Charter it was found that the date that was signed was August 23, 1963.....so in August we can have our 62nd Anniversary, right day, right year!

Wishing all the Moms out there a very Happy Mother's Day! Also, we hope you have a fun and safe Memorial Day Weekend - celebrate the beginning of Summer, which we have had a month or so of already.



## Kaye Prox Food Bank Update

*Submitted by Kristi Saligame*

Sharing a recent note from Keri Jupin, at the Village Inn at 7011 W. Hillsborough Avenue. In 2024, the food bank received \$1,115 from the Village Inn, based on diners' receipts. We are so thankful for their, and your, support! Please continue to bring us your receipts when you dine there.



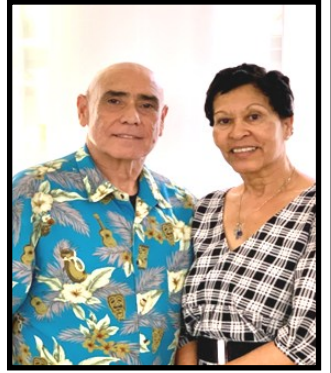
- Let us express our thank you for everything you do for the people in our community. We understand that you work very hard and are always in need of funds to help your church. Village Inn would like to help you raise money. We have put together a program that will allow you to collect receipts from our restaurant and we will in turn give back 10% of the sub total of everything spent by any member of your church. Bring them in once a week or once per month and collect money (cash on the spot!). There are already a lot of schools and churches that benefit greatly from our program, and we thought it might work for you as well. Enclosed, you will find a free meal coupon for your personal use as a token of our appreciation.
- Looking forward to working as a team.
- General Manager , Keri Jupin

We are so thankful for the student volunteers from Jefferson and Alonso High Schools who joined us over their Spring Break. They brightened our days with their service and their smiles!! Huge thanks to Judith Stocker for organizing.



## Portico Ministry Report

*Submitted by Rick and Angela Padin*



Greetings from the Portico Ministry:

The feeding of the houseless neighbors continues at a steady pace. It seems as we journey into spring, more new faces are joining the already crowded group. We find ourselves running out of warm meals and thanks to the food bank, we're able to supplement with day bags and meet the needs. Although we're receiving 25 warm meals, we're serving anywhere between 27-30 individuals.

We've received a number of clothes donations, including some men's but mostly women's. Very few shoes received. Moving forward into the warm(er) months of the year, t-shirts, shorts and sneakers are always welcomed and in demand. We appreciate used and clean summer ware, socks, towels and toiletry items, toothbrush and paste.

We pray and thank God for the opportunity to serve our community in need. We thank you for supporting us.

Angela and Rick

---



**Do you know anything about this quilt patch?**

**Please call Gail Smeach, 656-200-0264**





## Outreach Ministry

By Danielle Kearney

Recently, Outreach Ministry Team members, Karen Matteson and Danielle Kearney, visited The Children's Board Family Resource Center (CBFRC) located at 7520 W. Waters Ave in Tampa. We met with Elizabeth, the Center Manager and with Tyheshia, the Program Director. We were both impressed with the many programs offered at the center. The center partners with agencies providing quality programs to families in the community. CBFRC is managed by Lutheran Services Florida.



Among the many programs the centers provides are, Early Childhood Service Coordination, Intake and Referral Services, Computer Lab (online job applications, financial aid programs, and more,) Free Public Notary, Use of Facility, Volunteer Work and so many more.

The Volunteer program is open to anyone willing to share their time and talents. You might want to share your storytelling abilities, artistic talents, computer knowledge or whatever your talent might be with the children and adults served at CBFRC. All volunteers must have a background check and participate in a virtual training.

While at the center, Elizabeth mentioned that a Prom Dress Drive was in progress with donations needed by March 31. Both Karen and Danielle decided to participate in the drive. Karen made an appeal to the LCOS family on March 16th. On March 31, 9 Prom dresses, a tulle skirt, shoes, a couple of handbags, hair accessories and jewelry, were delivered to the center. A big thank you to all who participated. You brought joy and smiles to those young ladies!

There are 7 locations of The Children's Board Family Resource Centers. The phone number for the center on Hanley Road is (813) 356-1703. You can also go to their website at [www.familysupporthc.org](http://www.familysupporthc.org).

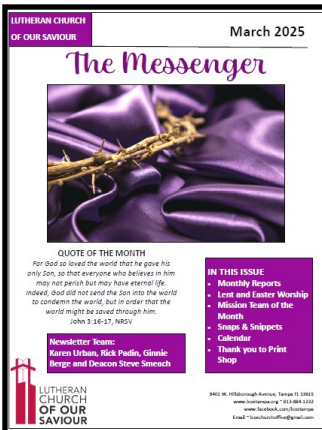
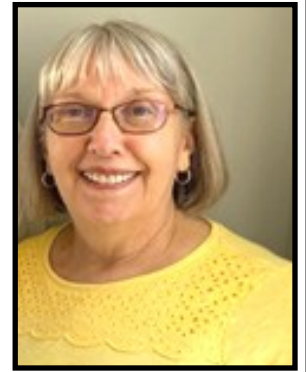
The June newsletter will bring you more information on the wonderful programs at CBFRC.





## Mission Team of the Month—Newsletter Team

*Submitted by Karen Urban*



Our team is composed of Rick Padin, Ginnie Berge, Deacon Steve Smeach and myself. We meet once per month at 11:30 in the meeting room behind the altar on the first Wednesday after the 10th, which is the newsletter deadline.

Our goal is to communicate all the happenings at LCOS from the previous month and look forward to what's coming up in the future. To this end we rely heavily on all of you—from the committee chairs to elected officers to "Snaps and Snippets" submitters—to pass along information to keep the lines open so everyone is aware of all the wonderful things God is doing at LCOS.

Regarding "Snaps and Snippets", please feel free to contribute photos with short phrases. These can be church happenings or something interesting or moving that you see in your life around you. This sharing of ourselves will keep the personal feel that is so important and will make it YOUR newsletter.

Please feel free to join us at our meetings or by submitting articles to [lcoschurchoffice@gmail.com](mailto:lcoschurchoffice@gmail.com), using NEWSLETTER in the subject line. (Hopefully we soon will have a dedicated email address!)



*Submitted by Ms. Rita Blyden*

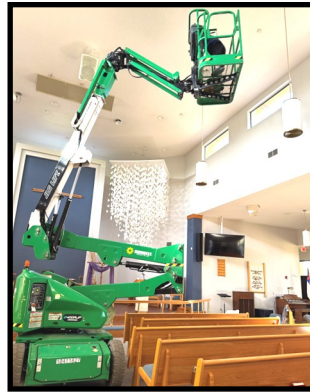
Testing the children in my Sunday school class to see if they understood the concept of getting to heaven, I asked them if I sold my house and my car, had a big garage sale and gave all my money to the church if that would get me into Heaven. No was the reply. I said if I cleaned the church every day, mowed the yard and kept everything neat and tidy, would that get me into Heaven? Again, they answered no! By now I was starting to smile...this was fun! Well, then ...if I was kind to animals and gave candy to all the kids and loved my spouse, would that get me into Heaven? Again, they all answered no! I was just bursting with pride for them. I continued, then how can I get into Heaven? A five-year-old boy shouted out, "YOU GOTTA BE DEAD!"

**Easter Plant** Teacher to Sunday School class: "Now, the poinsettia is a very pretty plant which we use at Christmas time. I wonder if any of you know what plant we use at Easter? Small girl in the back answered: "I know teacher, the eggplant."





There is evidence of lots of love and hard work on our campus!! A **huge thanks** to all who planted flowers, contributed toward the new mulch, helped clear the back lot, rebuilt the two benches and putting the altar light fixtures back in place after Hurricane Milton shook them out!



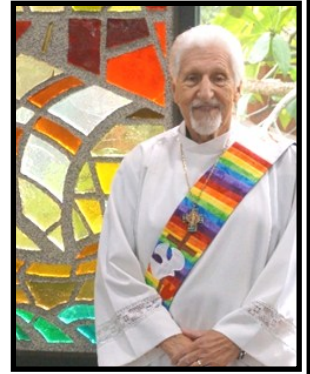


## Spotlight on Service: Tracking Attendance

Submitted by Deacon Steve Smeach

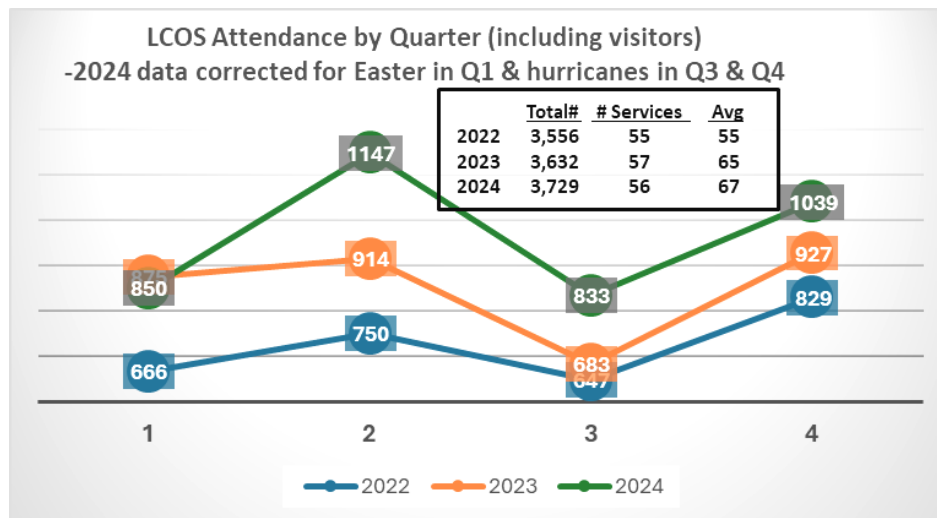


Volunteer time and talents are the lifeblood of a small congregation like ours at *Lutheran Church of Our Saviour!* In what the *Newsletter* staff hopes is the first in a series of occasional spotlights on service, this article highlights **Roger Swain**, who he is, what he does, and how it benefits LCOS. Like many of us, Roger is “from” many places, in his case Ohio, Massachusetts, and California. He and his wife, Lorella first attended LCOS in May 2007, having been invited to attend by their neighbor, Pat Sohl. And also like most of us they felt welcome from the very start!



Before he retired, Roger was an I.T. Manager at Hyatt Hotels and enjoyed vocal and instrumental music all of his life. So it was kind of natural for him to join the choir and to volunteer in several computer - and data-related activities at LCOS.

Except for his excellent baritone voice in the choir and his occasional piano or organ service, much of Roger’s work is “silent,” behind the scenes, and invisible to most of us but crucial to LCOS. Roger is our Financial Secretary. He counts and records our offerings, and quite literally “counts heads” and records worship attendance. Yes, he’s the guy who gives you your year-end giving statements. Over the years, Roger has amassed and summarized a mountain of information about LCOS. Most of you know that I am a “numbers guy,” so I asked Roger recently what our attendance has been like over the last few years. Within a day or two, he sent me Excel spreadsheet files of attendance by year for the last several years. Below is a graph of LCOS attendance for the years 2022, 2023, and 2024 that I created from the data Roger provided.



As is typical of Roger, his work is exact and detailed. I was amazed with the creative summaries he had in his spreadsheets.

The good news is that the congregation size of LCOS is not decreasing like it is at so many other churches! Indeed, we have seen an almost uniform increase across three years! For those of you interested in this kind of information, our attendance shows the typical pattern across the year: high in Q2 and Q4 because of Easter and Christmas and low in the summer months of Q3.

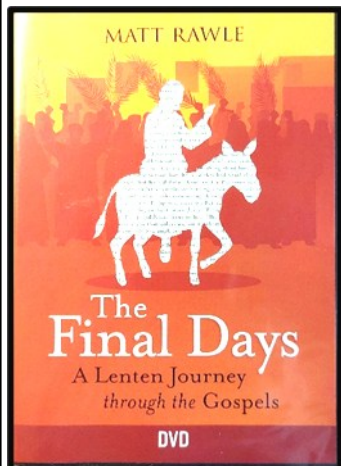
Thanks, Roger, for helping us to see that God is with us and blessing us as His servants. LCOS hosted almost 200 more worshipers of Him in 2024 as opposed to 2022!



## 2024 Lenten Thursdays

### *The Final Days*

*Submitted by Deacon Steve Smeach*



For our 2024 Lenten Thursday Services, Pr Steve Kauffman led us through a study of the DVD/book program, *The Final Days: A Lenten Journey Through the Gospels*, by a Methodist preacher, Matthew Rawle. It was fascinating to see how the four different Gospel writers told the story of Jesus' final days, His passion. There were about ten congregation at each of our five services.

Pr. Steve showed us how each Gospel offers a different lens through which we can understand Jesus' Passion:

**Matthew and Mark:** These Gospels are nearly identical, with detailed accounts of the betrayal, arrest, trial, and crucifixion of Jesus

**Luke:** Luke's account is closer to John's, with additional details such as the mocking by soldiers and the prayer at the Mt. of Olives.

**John:** John's Gospel provides a distinct theological perspective, focusing on Jesus' divine nature and his purpose in fulfilling God's plan of salvation. It includes unique details such as the scene with the two bandits and Jesus' final words, "It is finished."

Pr. Steve showed us how our modern version of Jesus' passion is a combination of those four stories. Thank you, Pr. Steve!



Impromptu youth moment on April 6 to discuss plans for the next two weeks.

*Submitted by Gail Smeach*

## Snap & Snippets



A few of us from church had a wonderful time going to lunch at the Palm Pavilion Beachside Grill on Clearwater Beach. It was a beautiful day and the food was delicious. Always great getting out with good friends.

*Submitted by Fran Beauregard*



Birthday blessings . . .  
Yolanda Jacobs celebrating 76 years

*Submitted by Rick Padin*



**STAYING  
CONNECTED**



Pastoral Care Team visit with Mid Brenner

*Submitted by Rick Padin*



## Snaps & Snippets—Submitted by Gail Smeach

*Thanks, a Brunch!*  
*LCOS Golf Brunch—April 5th*



## LCOS Community Easter Egg Hunt

*Snaps & Snippets Submitted by Dolly Lewis-Patterson and Sara and Ginnie Berge*



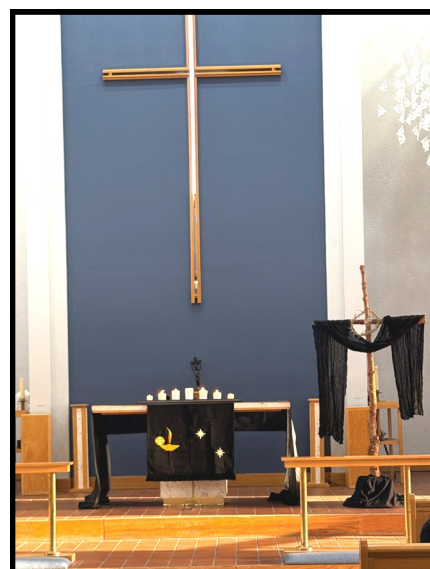


**Snaps & Snippets—Submitted by Gail Smeach, Barbara Beauregard, Karen Urban**



Gail Smeach works her magic again! A palm lined trail to Golgotha and an empty tomb.

Thank you to Gail and Barbara for sharing your time and talents in enhancing our worship space.







*Amelia Jane Waldrop*

## Baptisms

Sunday, March 30th



*Cameron Allen Groh*



*Photos submitted by Gail Smeach  
and Barbara Beauregard*

### LCOS Birthdays May and June

Dawn Tinnell	May 6
Kelly Kaladeen	May 11
Rita Blyden	May 13
Carolyn Kunzman	May 13
Ben Major	May 15
Maysie Richters	May 15
Nikhil (Nik) Saligame	May 18
Audrey Howze	May 20
Cherri Krall	May 20
Sarah Muir	May 30
Gary Jordan	May 31

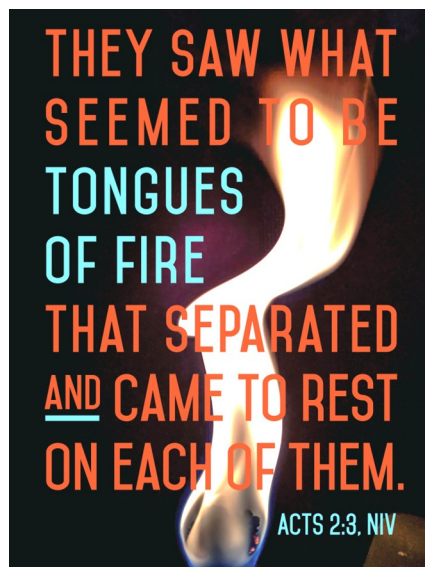


Michelle Griffith	June 1
Tom Carroll	June 4
Diane Tolzman	June 4
Fran Beauregard	June 11
Greg Reed	June 16
Della Griscti	June 18
Martin Stewart	June 20
Diana Meehan	June 25
Fraser Muir	June 28

If your birthday is missing from our list, please contact Roger Swain, 813-886-7961 or [roger.swain@tampa.rr.com](mailto:roger.swain@tampa.rr.com), so that we may include you next year!

## May 2025

Sunday	Monday	Tuesday	Wednesday	Thursday	Friday	Saturday
<b>27</b> <b>Second Sunday of Easter</b> 8:30am Adult Bible Class <b>9:30am Worship with Holy Communion</b> 11:00am Council Meeting 11:00am Fellowship 12:30pm New Ark	<b>28</b> 10:30am Portico Ministry 12:20pm Food Bank	<b>29</b> 7:00pm AA	<b>30</b> 10:30am Portico Ministry 12:20pm Food Bank 7:00pm AA	<b>1</b> <b>National Day of Prayer</b> 10:00am Choir Rehearsal 10:00am Pastor Steve Hours 6:30pm New Ark 7:00pm AA	<b>2</b> 2:30pm Food Bank	<b>3</b>
<b>4</b> <b>Third Sunday of Easter</b> 8:30am Adult Bible Class <b>9:30am Worship with Holy Communion</b> 11:00am Fellowship 12:30pm New Ark	<b>5</b> 10:30am Portico Ministry 12:20pm Food Bank	<b>6</b> 7:00pm AA	<b>7</b> 10:30am Portico Ministry 12:20pm Food Bank 7:00pm AA	<b>8</b> 10:00am Choir Rehearsal 10:00am Pastor Steve Hours 6:30pm New Ark 7:00pm AA	<b>9</b> 2:30pm Food Bank	<b>10</b> NEWSLETTER DEADLINE
<b>11</b> <b>Fourth Sunday of Easter</b> <b>Mother's Day</b> 8:30am Adult Bible Class <b>9:30am Worship with Holy Communion</b> 11:00am Fellowship 12:30pm New Ark	<b>12</b> 10:30am Portico Ministry 12:20pm Food Bank	<b>13</b> 7:00pm AA	<b>14</b> 10:30am Portico Ministry 11:30am Newsletter Team Meeting 12:20pm Food Bank 7:00pm AA	<b>15</b> 10:00am Choir Rehearsal 10:00am Pastor Steve Hours 6:30pm New Ark 7:00pm AA	<b>16</b> 2:30pm Food Bank	<b>17</b>
<b>18</b> <b>Fifth Sunday of Easter</b> 8:30am Adult Bible Class <b>9:30am Worship with Holy Communion</b> 11:00am Council Meeting 11:00am Fellowship 12:30pm New Ark	<b>19</b> 10:30am Portico Ministry 12:20pm Food Bank	<b>20</b> 7:00pm AA	<b>21</b> 10:30am Portico Ministry 12:20pm Food Bank 7:00pm AA	<b>22</b> 10:00am Choir Rehearsal 10:00am Pastor Steve Hours 6:30pm New Ark 7:00pm AA	<b>23</b> 2:30pm Food Bank	<b>24</b>
<b>25</b> <b>Sixth Sunday of Easter</b> 8:30am Adult Bible Class <b>9:30am Worship with Holy Communion</b> 11:00am Fellowship 12:30pm New Ark	<b>26</b> <b>Memorial Day</b> 10:30am Portico Ministry 12:20pm Food Bank	<b>27</b> 7:00pm AA	<b>28</b> 10:30am Portico Ministry 12:20pm Food Bank 7:00pm AA	<b>29</b> 10:00am Pastor Steve Hours 6:30pm New Ark 7:00pm AA	<b>30</b> 2:30pm Food Bank	<b>31</b>



**Pentecost Sunday**  
**Sunday, June 8**

**Remember to wear red!**





**DEADLINE FOR SUBMISSION OF JUNE 2025  
NEWSLETTER ARTICLES IS:  
MAY 10, 2025**

Please submit articles to  
*lcoschurchoffice@gmail.com*, and use the word  
***“Newsletter”*** in the Subject Line. Please identify  
yourself so we can list you as author!

Printing kindly provided as a charitable contribution  
through the efforts of Kimberly Kelly and Ken Scrase at

**Loading Dock 2  
5410 Pioneer Park Blvd, Suite E  
Tampa, FL 33634**